

CITY OF GOODYEAR, ARIZONA

MCDOWELL ROAD COMMERCIAL CORRIDOR IMPROVEMENT DISTRICT (AMENDED)

MAYOR
JOE PIZZILLO

VICE MAYOR
LAURA KAINO

COUNCIL MEMBERS
SHERI LAURITANO
WALLY CAMPBELL
BILL STIPP
BRANNON HAMPTON
VICKI GILLIS



CERTIFICATION

I, Darice McCracken CITY CLERK OF THE CITY OF GOODYEAR, ARIZONA, DO HEREBY CERTIFY THAT THIS IS THE AMENDED ASSESSMENT DIAGRAM OF THE MCDOWELL ROAD COMMERCIAL CORRIDOR IMPROVEMENT DISTRICT, APPROVED BY THE MAYOR AND COMMON COUNCIL OF THE CITY OF GOODYEAR AT A MEETING ON THE 10th DAY OF June, 2024 AND THAT A QUORUM WAS PRESENT.

BY Darice McCracken FILED BY Stacy N. St
CITY CLERK DEPUTY CLERK OF FINANCE

ASSESSMENT DIAGRAM SUBMITTED THIS 10th DAY OF June 2024

SUBMITTED BY Stacy N. St
DEPUTY CLERK OF FINANCE

PREPARED BY:



0-402-2611771
500 N. CENTRA, AVE
PHOENIX, AZ 85004
www.ardurra.com



APPROVAL

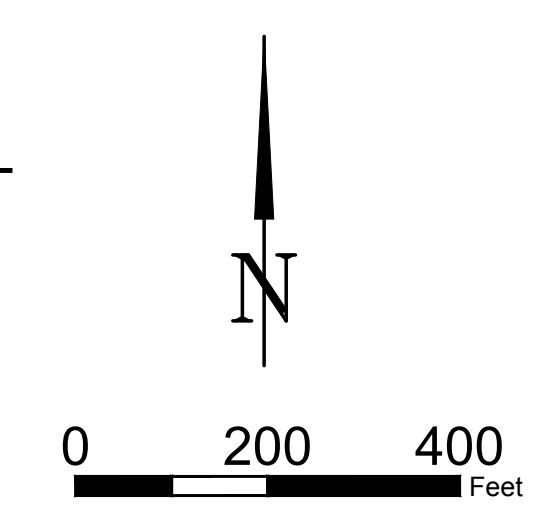
APPROVED BY RESOLUTION NO. 2024-2406 AT A MEETING OF THE COMMON COUNCIL OF THE CITY OF GOODYEAR, ARIZONA HELD THIS 10th DAY OF June, 2024

BY Darice McCracken
CITY CLERK



CITY OF GOODYEAR IMPROVEMENT DISTRICT ASSESSMENT DIAGRAM

SCALE: 1" = 200' - 0"



ASSESSMENT NUMBER	PARCEL NUMBER
1-02-001	APN#
9	501-69-016E
10	501-69-966B
11-01-001	501-73-967
11-01-002	501-73-968
11-01-003	501-73-969
11-01-004	501-73-970
11-01-005	501-73-971
11-01-006	501-73-972
11-01-007	501-73-973
11-01-008	501-73-974
12	501-71-984
13-01-001	501-71-983A
13-01-002	501-71-983B
14-01-001	501-73-965
	501-73-962
	501-73-964
15	501-71-982

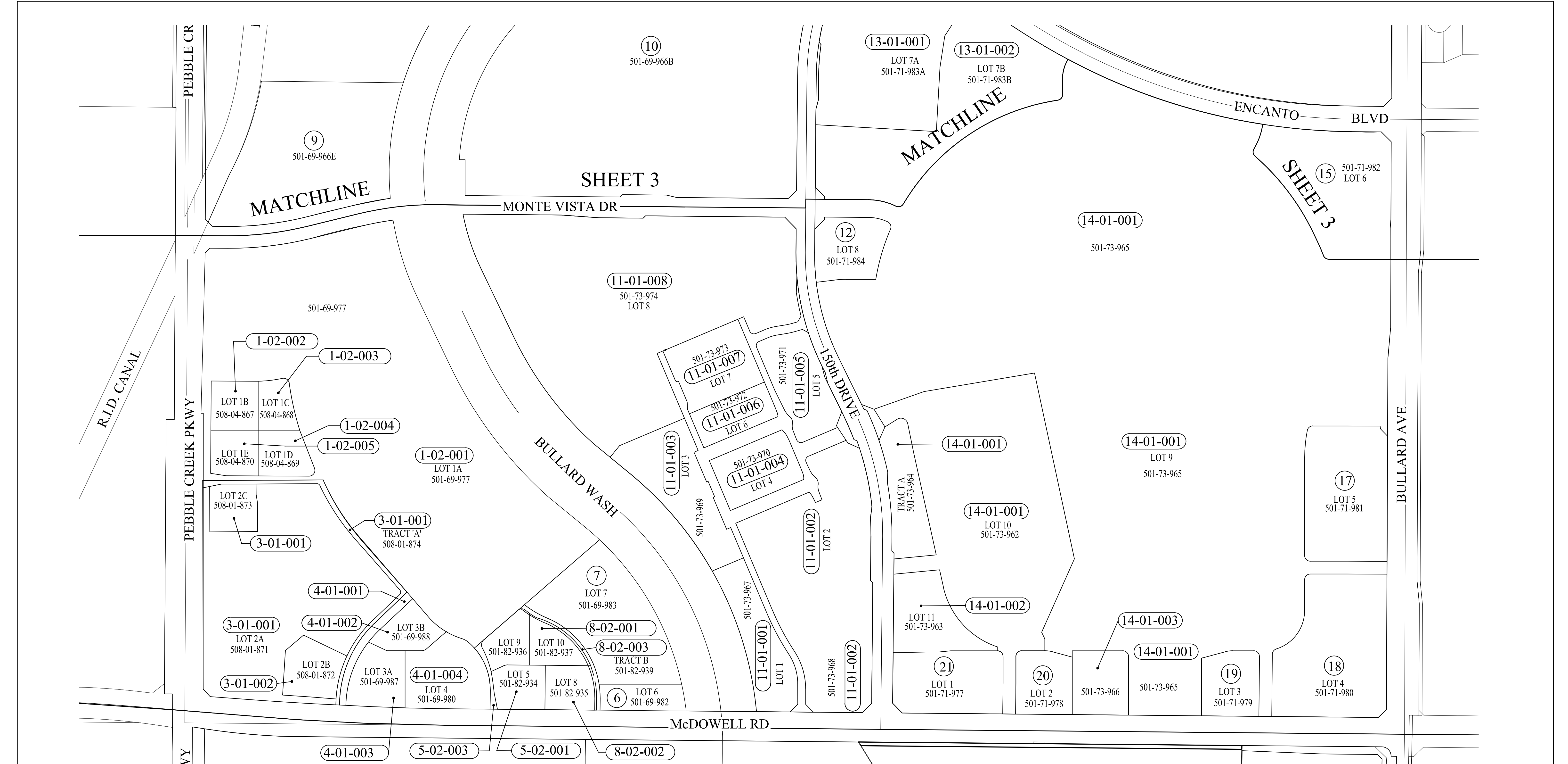
LEGEND	
	ID BOUNDARY
	AREA OF IMPROVEMENT
	500-04-972-A PARCEL NUMBER
	ASSESSMENT NUMBER
	MODIFIED ASSESSMENT NUMBER

REVISED 4-9-2024
 REVISED 11-29-2021
 REVISED 9-10-2020
 REVISED 5-14-2019
 REVISED 9-10-2018
 REVISED 3-16-2018
 REVISED 10-26-2009
 ORIGINAL 9-24-2007



O: 602.263.1177
 1001 N. CENTRAL AVE
 SUITE 900
 PHOENIX, AZ 85004
www.ardurra.com

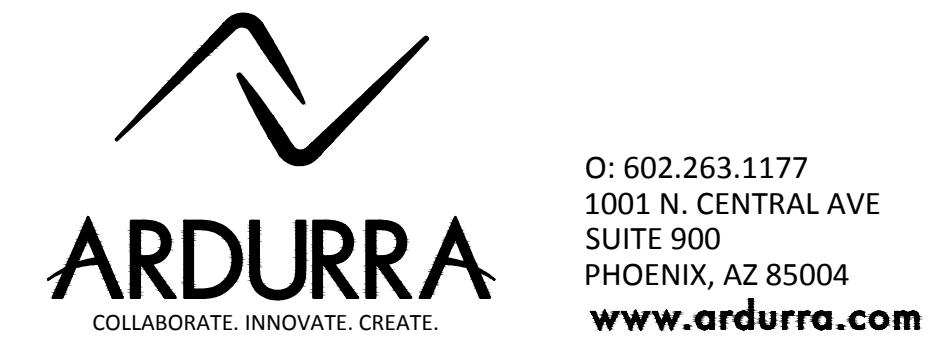
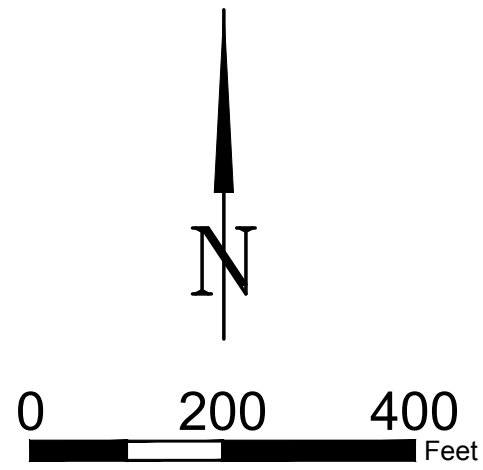
MCDOWELL ROAD COMMERCIAL CORRIDOR IMPROVEMENT DISTRICT CITY OF GOODYEAR, AZ			
DESIGNED	BY	DATE	SCALE: 1" = 200' - 0" SHEET 2 OF 4
DRAWN	JEB	4-9-24	
CHECKED	JEB	4-9-24	



ASSESSMENT NUMBER	PARCEL NUMBER	ASSESSMENT NUMBER	PARCEL NUMBER	ASSESSMENT NUMBER	PARCEL NUMBER
1-02-001	501-69-977	8-02-001	501-82-937	12	501-69-984
1-02-002	508-04-867	8-02-002	501-82-935	13-01-001	501-71-983A
1-02-003	508-04-868	8-02-003	501-82-939	13-01-002	501-71-983B
1-02-004	508-04-869	9	501-69-966E	14-01-001	501-73-965
1-02-005	508-04-870	10	501-69-966B		501-73-962
3-01-001	508-01-871	11-01-001	501-73-967		501-73-964
	508-01-873	11-01-002	501-73-968	14-01-002	501-73-963
	508-01-874	11-01-003	501-73-969	14-01-003	501-73-966
3-01-002	508-01-872	11-01-004	501-73-970	15	501-71-982
4-01-001	501-69-989	11-01-005	501-73-971	17	501-71-981
4-01-002	501-69-988	11-01-006	501-73-972	18	501-71-980
4-01-003	501-69-987	11-01-007	501-73-973	19	501-71-979
4-01-004	501-69-980	11-01-008	501-73-974	20	501-71-978
5-02-001	501-82-934			21	501-71-977
5-02-002	501-82-936				
5-02-003	501-82-938				
6	501-69-982				
7	501-69-983				

CITY OF GOODYEAR IMPROVEMENT DISTRICT ASSESSMENT DIAGRAM

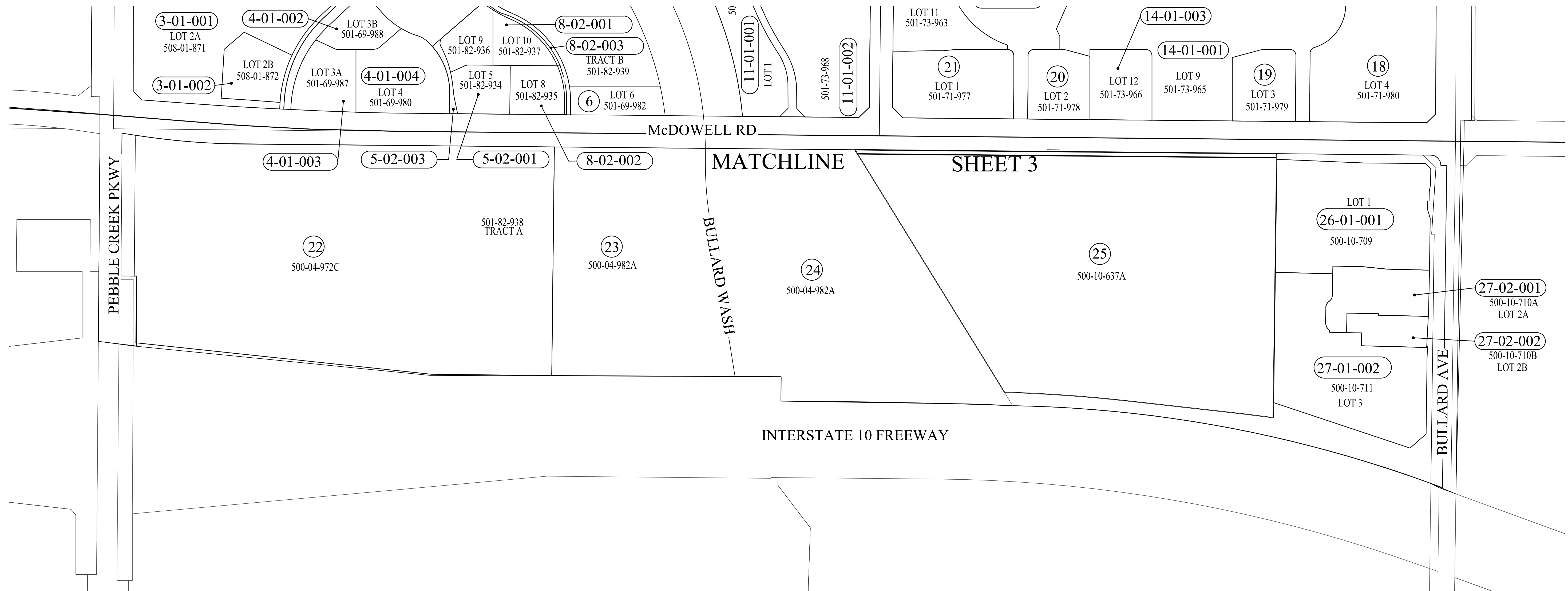
SCALE: 1" = 200' - 0"



LEGEND	
—	ID BOUNDARY
500-04-972-A	AREA OF IMPROVEMENT
④	PARCEL NUMBER
④	ASSESSMENT NUMBER
8-01-002	MODIFIED ASSESSMENT NUMBER

REVISED 4-9-2024
 REVISED 11-29-2021
 ORIGINAL 9-24-2007

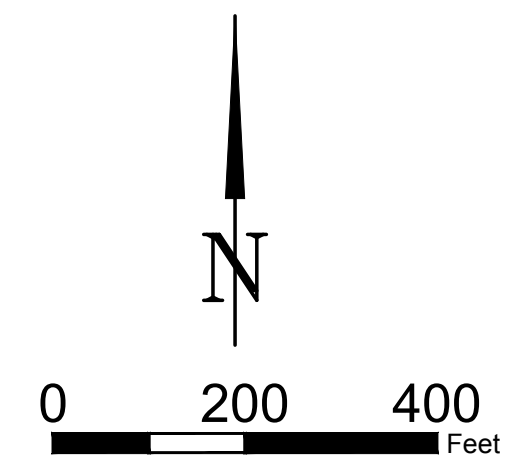
MCDOWELL ROAD COMMERCIAL CORRIDOR IMPROVEMENT DISTRICT CITY OF GOODYEAR, AZ			
DESIGNED	BY	DATE	SCALE: 1" = 200' - 0"
DRAWN	JEB	4-9-24	SHEET 3 OF 4
CHECKED	JEB	4-9-24	



ASSESSMENT NUMBER	PARCEL NUMBER	ASSESSMENT NUMBER	PARCEL NUMBER
3-01-001	508-01-871	20	501-71-978
3-01-002	508-01-872	21	501-71-977
4-01-001	501-69-979	22	500-04-972C
4-01-002	501-69-979	23	500-04-982A
4-01-003	501-69-979	24	500-04-982A
4-01-004	501-69-980	25	500-10-637A
5-02-001	501-82-934	26-01-001	500-10-709
5-02-002	501-82-936	27-02-001	500-10-710A
5-02-003	501-82-938	27-02-002	500-10-710B
6	501-69-982	27-01-002	500-10-711
8-02-001	501-82-937		
8-02-002	501-82-935		
8-02-003	501-82-939		
11-01-001	501-73-967		
11-01-002	501-73-968		
11-01-003	501-73-969		
11-01-004	501-73-970		
11-01-005	501-73-971		
11-01-006	501-73-972		
11-01-007	501-73-973		
11-01-008	501-73-974		
14-01-001	501-73-965		
14-01-002	501-73-962		
14-01-003	501-73-964		
18	501-71-980		
19	501-71-979		

**CITY OF GOODYEAR IMPROVEMENT DISTRICT
ASSESSMENT DIAGRAM**

SCALE: 1" = 200' - 0"



LEGEND

	ID BOUNDARY
	AREA OF IMPROVEMENT
500-04-972-A	PARCEL NUMBER
④	ASSESSMENT NUMBER
②7-01-002	MODIFIED ASSESSMENT NUMBER

REVISED 4-9-24
 REVISED 11-29-21
 REVISED 9-10-2020
 REVISED 5-14-2019
 REVISED 9-10-2018
 REVISED 3-16-2018
 REVISED 10-26-2009
 ORIGINAL 9-24-2007



O: 602.263.1177
 1001 N. CENTRAL AVE
 SUITE 900
 PHOENIX, AZ 85004
www.ardurra.com

MCDOWELL ROAD COMMERCIAL CORRIDOR IMPROVEMENT DISTRICT CITY OF GOODYEAR, AZ			
DESIGNED	BY	DATE	SCALE: 1" = 200' - 0" SHEET 4 OF 4
DRAWN	JEB	4-9-24	
CHECKED	JEB	4-9-24	